

Jellon



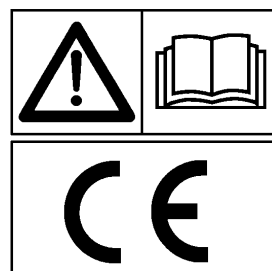
FFH 240 - FFH 240GM

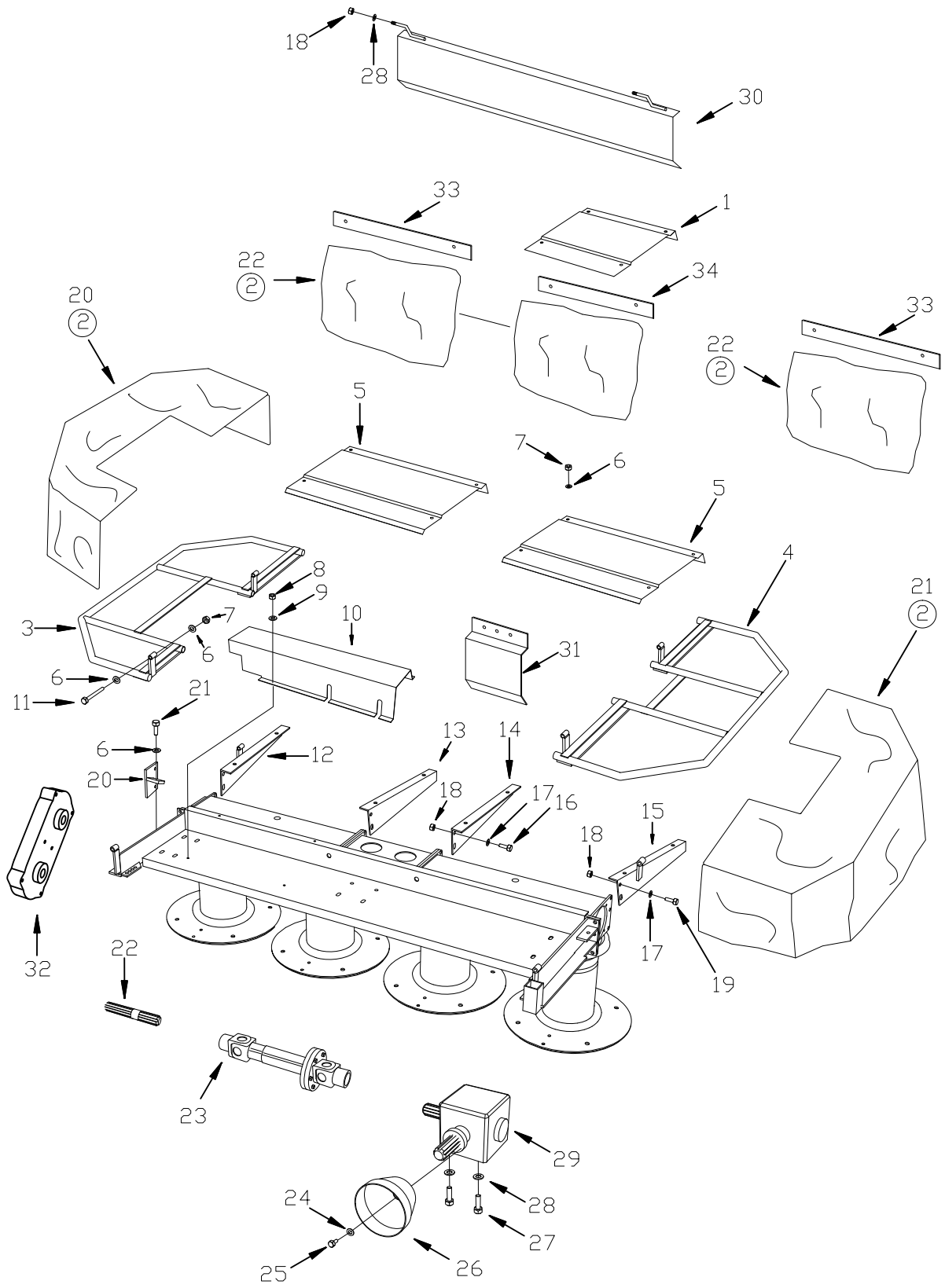
FFH 270 - FFH 270GM

FFH 300 - FFH 300GM

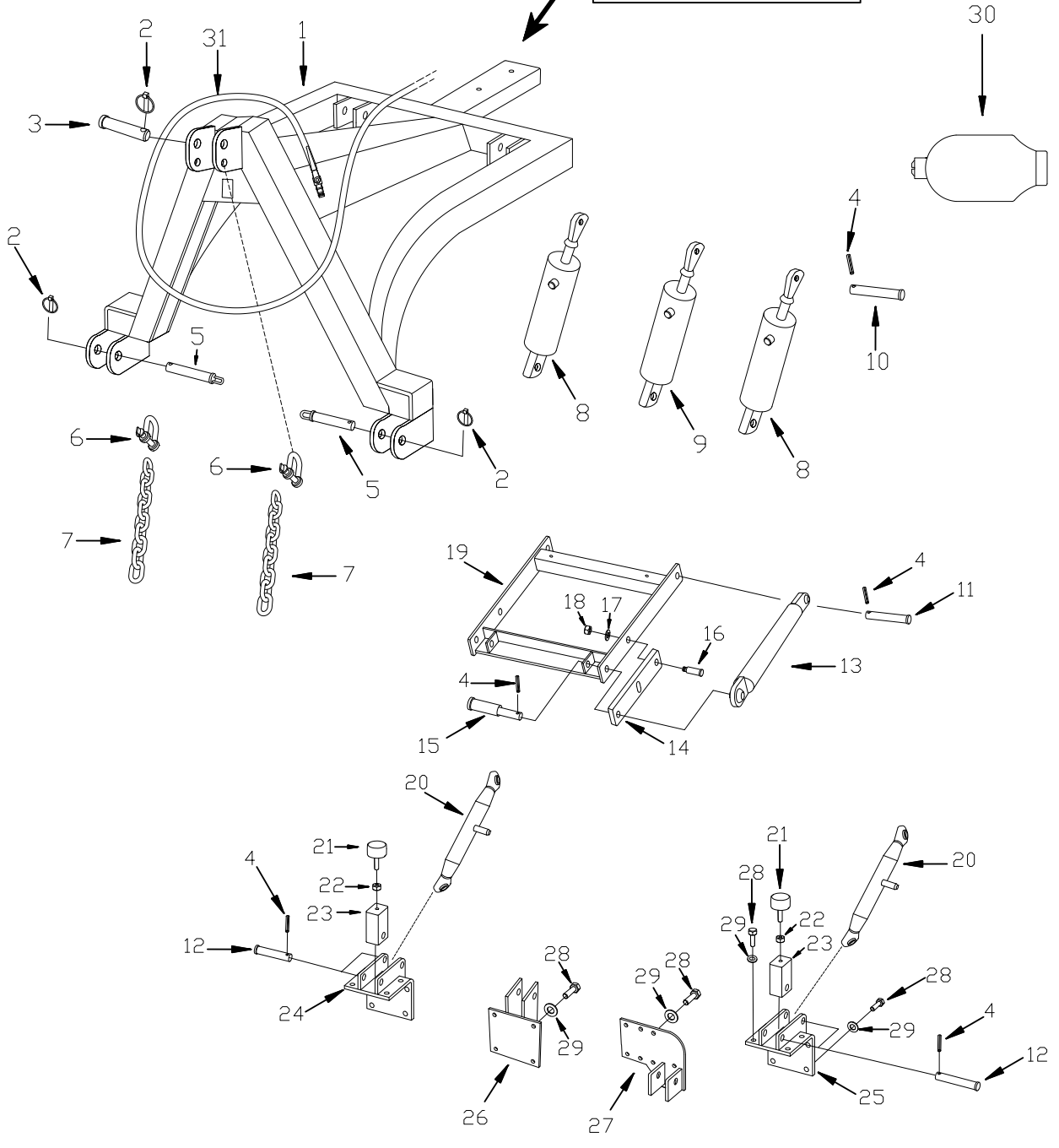
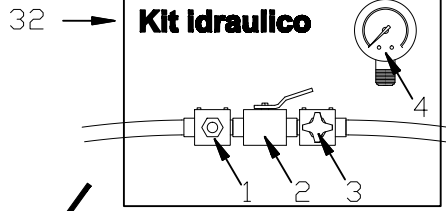
IT - PARTI DI RICAMBIO

EN - SPARE PARTS

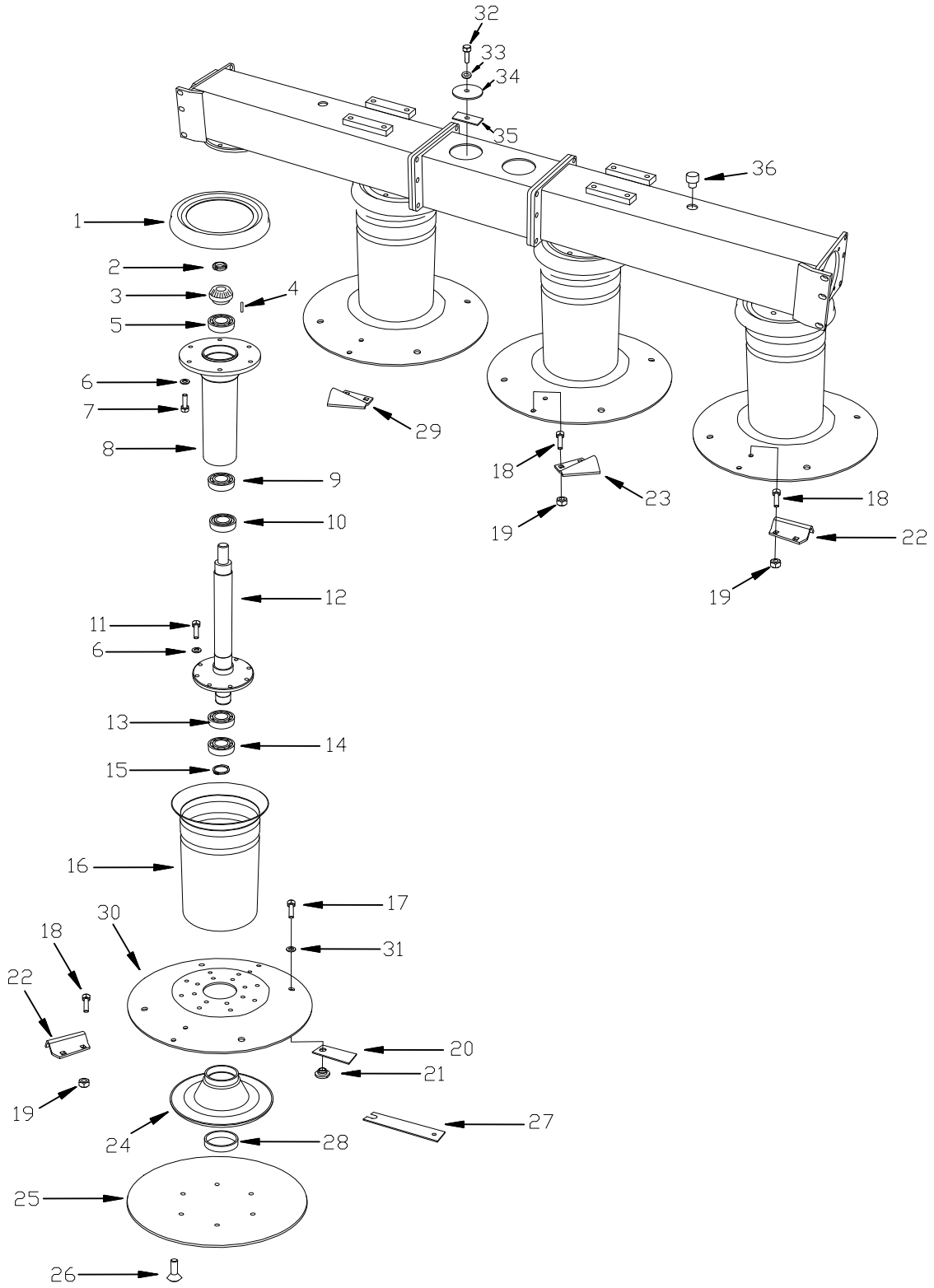




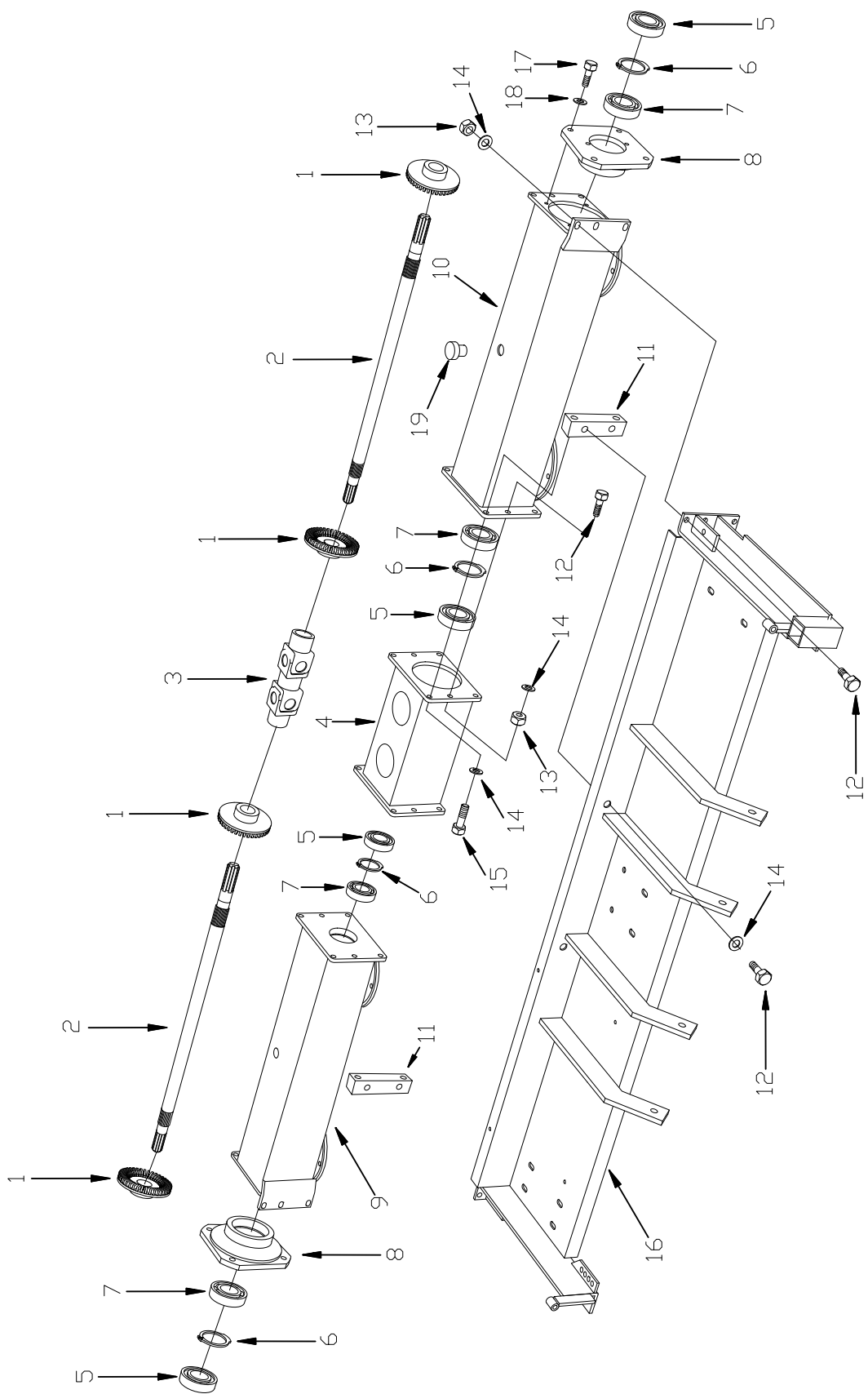
TAV.	TIPO	CODICE	DENOMINAZIONE	DENOMINATION
1	FFH240	2076240	Lamiera copertura	Cover
1	FFH270	2076280	Lamiera copertura	Cover
1	FFH300	2076300	Lamiera copertura	Cover
2	FFH240	6876650	Tela completa	Covering canvas
2	FFH270	6876850	Tela completa	Covering canvas
2	FFH300	6876950	Tela completa	Covering canvas
3		6930520	Telaio sinistro	Frame, left
4		6930530	Telaio destro	Frame, right
5	FFH240	2076241	Lamiera copertura	Cover
5	FFH270	2076281	Lamiera copertura	Cover
5	FFH300	2076301	Lamiera copertura	Cover
6		5812041	Rondella M 10x30	Washer M 10x30
7		2823006	Dado M 10 grippy	Nut M 10 grippy
8		2823001	Dado M 8	Nut M 8
9		5856012	Rondella M 8x30 fascia larga	Washer M 8x30
10	FFH240	5330510	Protezione cardano	Cover
10	FFH270	5330610	Protezione cardano	Cover
10	FFH300	5330710	Protezione cardano	Cover
11		7417131	Vite M 10x80	Screw M 10x80
12		6542511	Supporto est. Sx	External left support
13		6576513	Supporto int. Sx	Internal left support
14		6576512	Supporto int. Dx	Internal right support
15		6542510	Supporto est. Dx	External right support
16		7448015	Vite M 12x35 MB	Screw M 12x35 MB
17		5801380	Rondella M 12 grower	Washer M 12 grower
18		2801380	Dado MB M 12	Nut MB M 12
19		7402388	Vite M 12x25	Screw M 12x25
20		6876502	Tela sinistra	Left Cover
21		6876508	Tela destra	Right Cover
22	FFH240	6876629	Tela centrale	Center Cover
22	FFH270	6876729	Tela centrale	Center Cover
22	FFH300	6876829	Tela centrale	Center Cover
23	FFH240	1234537	Cardano con friz.	Cardan clutch
23	FFH270-300	1234538	Cardano con friz. e RL	Cardan clutch
24		5812041	Rondella M 10x30	Washer M 10x30
25		7403306	Vite M 10x20	Screw M 10x20
26		2606327	Cuffia	Guard
27	FFH240	7402709	Vite M 12x35 TE	Crew M 12x35 TE
27	FFH270-300	7439031	Vite M 14x30	Crew M 14x30
28	FFH240	5801380	Rondella M 12 grower	Washer M 12 grower
28	FFH270-300	5812019	Rondella M 14	Washer M 14
29	FFH240	6000003	Scatola rinvio G140	Gear box R140
29	FFH270-300	6000009	Scatola rinvio G160	Gear box R160
30	FFH240	2976603	Lamiera deflettore	Deflector plate
30	FFH270	2976803	Lamiera deflettore	Deflector plate
30	FFH300	2976903	Lamiera deflettore	Deflector plate
31	FFH240	5330531	Lamiera protezione	Protection plate
31	FFH270	5330631	Lamiera protezione	Protection plate
31	FFH300	5330731	Lamiera protezione	Protection plate
32	FFH240	1317130	Carter completo	Complete chain cover
32	FFH270-300	1317150	Carter completo 1" D.	Complete chain cover 1" D.
33	FFH240	5776633	Piatto tela	Steel rule
33	FFH270	5776733	Piatto tela	Steel rule
33	FFH300	5776833	Piatto tela	Steel rule
34		5776503	Piatto tela	Steel rule



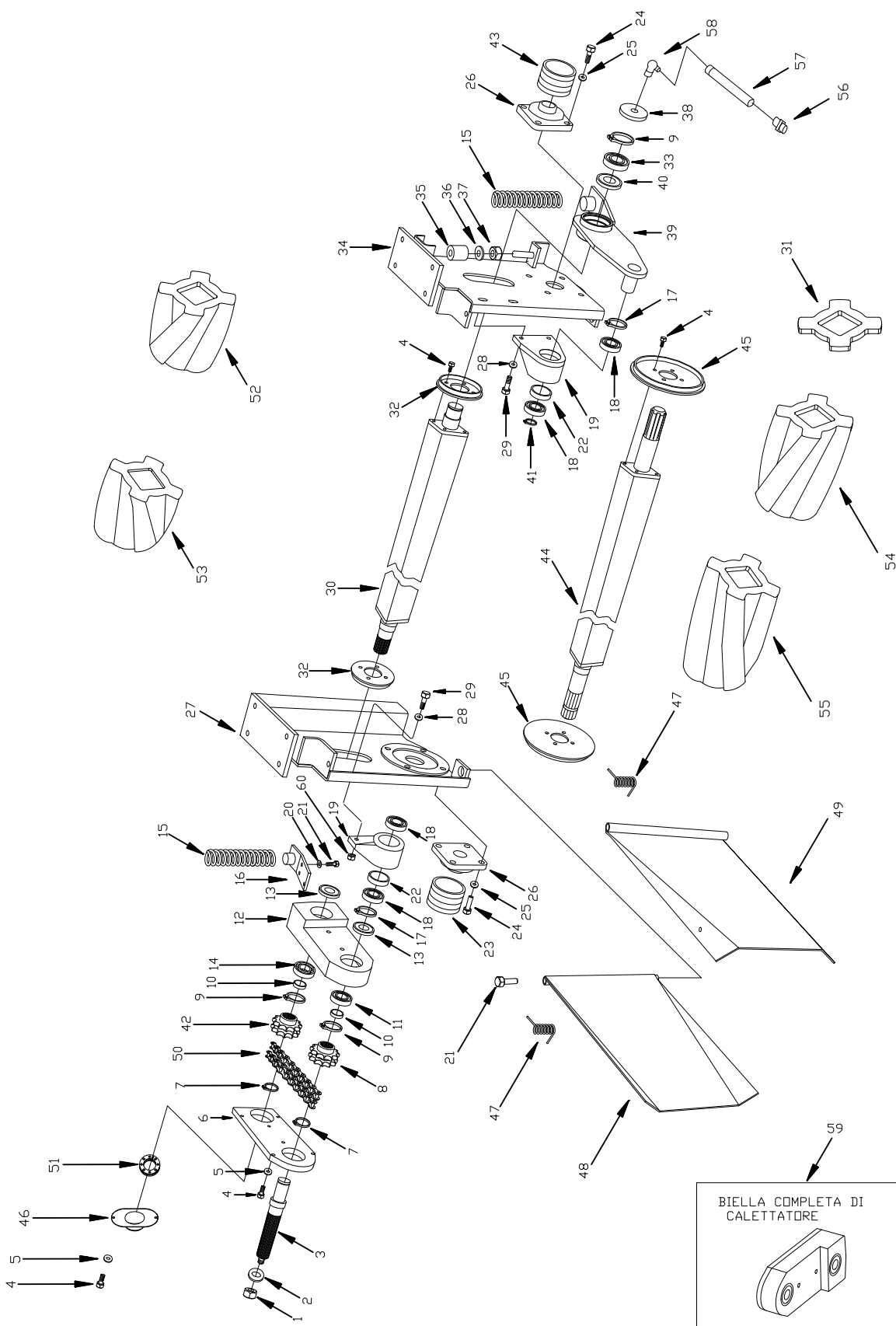
TAV.	TIPO	CODICE	DENOMINAZIONE	DENOMINATION
1		0675510	Attacco a 3 punti	3-point frame
2		6404387	Spina a scatto	Lynch pin 10
3		6404385	Spina 25	Pin 25
4		6424712	Spina 8x50	Securing pin 8x50
5		6454510	Spina 25x60	Pin 25x60
6		3624001	Grillo Ø11	Hook Ø11
7		1424720	Catena 20 anelli	Chain 20 rings
8		5175401	Pistone sollevamento	Lifting piston
9		5175501	Pistone galleggio	Floating piston
10		4875620	Perno	Pin
11		4875621	Perno	Pin
12		4875622	Perno	Pin
13		0975217	Biella bilancere	Tie rod
14		0575200	Asta bilancere	Auction balance
15		4875623	Perno	Pin
16		4875624	Perno bilancere	Pin
17		5839723	Rondella M 20	Washer M 20
18		2824731	Dado M 20 Autobloc.	Nut M 20
19		6975400	Telaio bilancere	Frame
20		7070221	Tirante 3° punto	Tie-rod
21		6675030	Tampone gomma	Pad
22		2801301	Dado M 10 Autobloc.	Nut M 10
23		7275886	Tubo distanziale	Distance tube
24		6575240	Supporto Dx	Right support
25		6575241	Supporto Sx	Left support
26	FFH240	6533120	Supporto tubo	Support
27	FFH270-300	6533121	Supporto tubo	Support
28		7402301	Vite M 12x30	Screw M 12x30
29		5801380	Rondella M 12 grower	Washer M 12 grower
30		0139010	Accumulatore di Azoto 0.75	Nitrogen accumulator
31		7275202	Kit tubi flessibili	Flexible pipe kit
32		4470002	Gruppo manovella	Kit handle
1		0970001	Blocchetto croce	Block cross
2		4470101	Manovella con nipplo	Handle with nipple
3		5570001	Esclusore per manometro	Pressure gauge
4		4470201	Manometro	Manometer



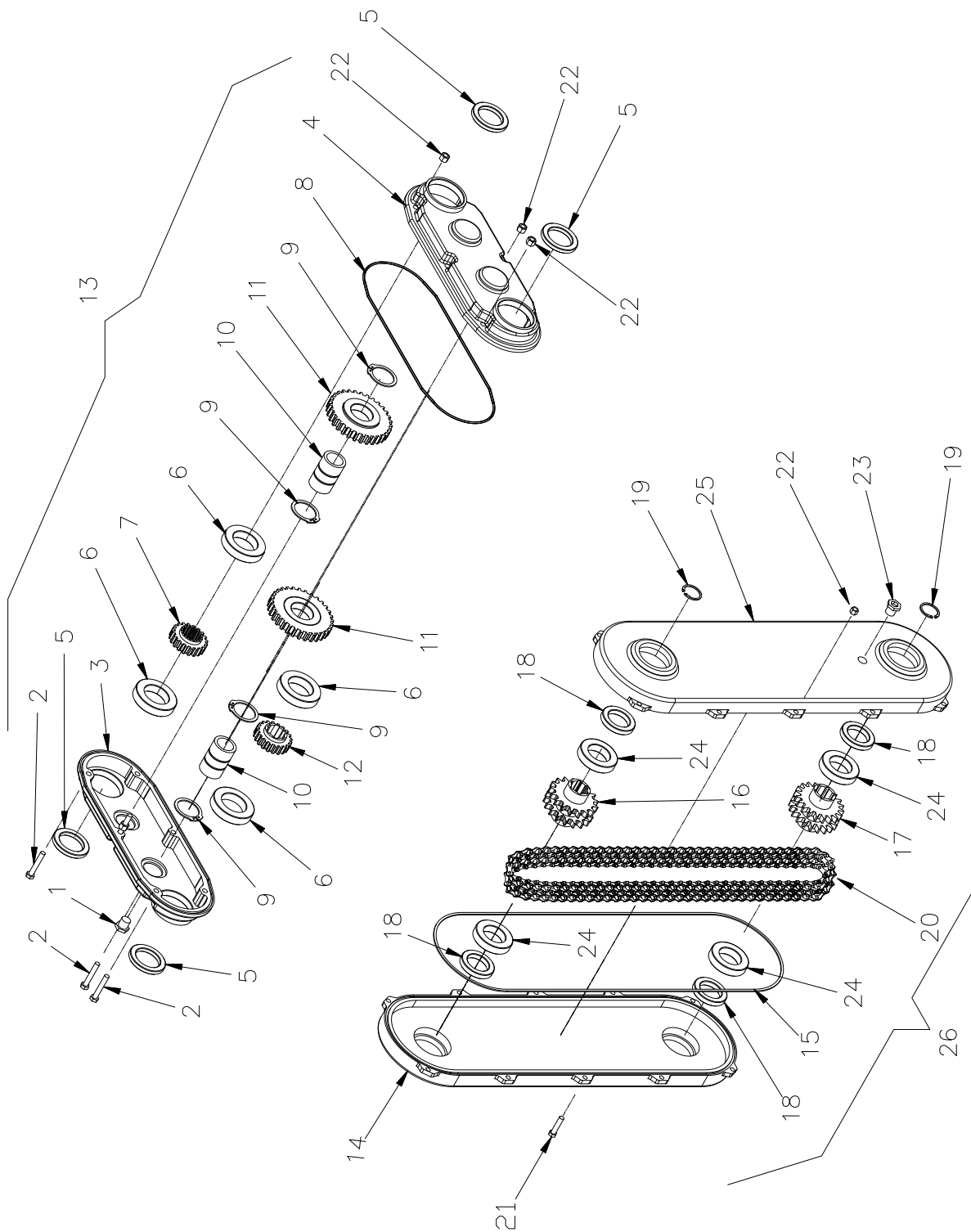
TAV.	TIPO	CODICE	DENOMINAZIONE	DENOMINATION
1		2032520	Coperchio	Cover
2		3703317	Ghiera M 25	Castle nut M 25
3	FFH240-270	5032025	Pignone Z 17	Sprocket Z 17
3	FFH300	5003119	Pignone Z 18	Sprocket Z 18
4		4303323	Linguetta 8x7x30	Key 8x7x30
5		2703320	Cuscinetto 6208	Bearing 6208
6		5802307	Rondella M 10 grower	Washer M 10 grower
7		7403306	Vite M 10x20	Screw M 10x20
8		7132360	Tromba rinforzata	Reinforced trumpet
9		2703321	Cuscinetto 3208	Bearing 3208
10		4732052	Paraolio 52x80x10	Oil seal 52x80x10
11		7402310	Vite M 10x25	Screw M 10x25
12		0132368	Albero portadisco	Cutter arbor
13		2703325	Cuscinetto 6208 2RS	Bearing 6208 2RS
14		2732009	Cuscinetto 32009	Bearing 32009
15		0303343	Anello 40x1,5 E	Circlip 40x1,5 E
16		1632525	Cilindro 2,5 mm	Cylinder mm. 2,5
17		7432528	Vite M 12x16	Screw M 12x16
18		7408014	Vite M 10x20 TTQST	Screw M 10x20
19		2801301	Dado M 10 Autobloc.	Nut M 10
20		1832532	Coltello sinistro	Knife, left
20		1832533	Coltello destro	Knife, right
21		4832530	Perno portacoltello	Pin knife support
22		0232001	Aletta esterna	Ext. Guide plate
23		0208013	Aletta destra	Guide plate, right
24		6508369	Supporto disco	Disc support
25	FFH240	3132525	Disco inferiore	Lower disc
25	FFH270	3103270	Disco inferiore	Lower disc
25	FFH300	3132570	Disco inferiore	Lower disc
26		7403311	Vite M 12x25 TPSEI	Screw M 12x25
27	FFH240	1532394	Chiave	Key
27	FFH270-300	1532395	Chiave	Key
28		6703371	Tappo 80x10	Plug 80x10
29		0208010	Aletta sinistra	Guide plate, left
30	FFH240	3132523	Disco superiore	Upper disc
30	FFH270	3132262	Disco superiore	Upper disc
30	FFH300	3132530	Disco superiore	Upper disc
31		5851010	Rondella molla a tazza M 12	Tab washer M 12
32		7401040	Vite M 10x20	Screw M 10x20
33		5802302	Rondella M 10	Washer M 10
34		5848030	Rondella M 110	Washer M 110
35		6548031	Supporto	Support
36		6702303	Tappo	Plug



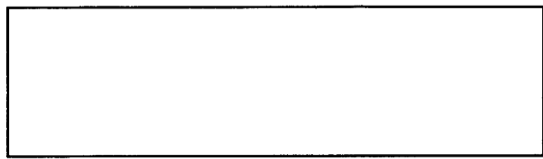
TAV.	TIPO	CODICE	DENOMINAZIONE	DENOMINATION
1	FFH240-270	2448025	Corona Z 36	Gear Z 36
1	FFH300	2449024	Corona Z 32	Gear Z 32
2	FFH240	0148625	Albero diam. 40	Shaft diam. 40
2	FFH270	0148825	Albero diam. 40	Shaft diam. 40
2	FFH300	0148925	Albero diam. 40	Shaft diam. 40
3		3848520	Giunto tipo 5	Joint 5 serie
4	FFH240	6048507	Scatola centrale	Gear box, middle
4	FFH270	6048807	Scatola centrale	Gear box, middle
4	FFH300	6048907	Scatola centrale	Gear box, middle
5		4702035	Paraolio 35x72x10	Oil seal 35x72x10
6		0306360	Anello seeger I 72	Seeger ring I 72
7		2702312	Cuscinetto 6207	Bearing 6207
8		2048503	Coperchio	Cover
9	FFH240	6031020	Vasca Sx	Gearbox, left
9	FFH270	6031820	Vasca Sx	Gearbox, left
9	FFH300	6031920	Vasca Sx	Gearbox, left
10	FFH240	6048505	Vasca Dx	Gearbox, right
10	FFH270	6048805	Vasca Dx	Gearbox, right
10	FFH300	6031905	Vasca. Dx	Gearbox, right
11		6531011	Supporto di fissaggio	Support
12		7420709	Vite M 12x35	Screw M 12x35
13		2801379	Dado M 12 Autobloc.	Nut M 12
14		5801380	Rondella M 12 grower	Washer M 12 grower
15		7424125	Vite M 12x50	Screw M 12x50
16	FFH240	6531616	Supporto condizion.	Conditioner support
16	FFH270	6531816	Supporto condizion.	Conditioner support
16	FFH300	6531916	Supporto condizion.	Conditioner support
17		7402310	Vite M 10x25	Screw M 10x25
18		5802302	Rondella M 10	Washer M 10
19		6702303	Tappo olio	Oil plug



TAV.	TIPO	CODICE	DENOMINAZIONE	DENOMINATION
1		2804338	Dado 16 autobloc.	Nut 16
2		5816126	Rondella 16	Washer 16
3		0136525	Albero	Shaft
4		7443520	Vite M 8x35 TE	Screw M 8x35
5		5823787	Rondella 8	Washer 8
6		2036528	Coperchio	Cover
7		0306314	Anello E 35	Seegerring E 35
8		5036528	Pignone Z 12 doppio	Sprocket Z 12
9		0306360	Anello I 72	Seegerring I 72
10		3236528	Distanziale	Spacer
11		2723785	Cuscinetto 6207 2RS	Bearing 6207 2RS
12		6536529	Supporto biella	Support
13		4736530	Paraolio 40x62x7	Oil seal 40x62x7
14		2736531	Cuscinetto 2207	Bearing 2207
15		4536532	Molla	Bush
16		6536533	Supporto molla	Bush support
17		0312051	Anello I 62	Seegerring I 62
18		2736534	Cuscinetto 6206 2RS	Bearing 6206 2RS
19		6536535	Supporto	Support
20		5802302	Rondella 10	Washer 10
21		7402310	Vite M 10x25	Screw M 10x25
22		3236536	Distanziale	Spacer
23		5336537	Protezione	Protection
24		7436538	Vite M 14x25	Screw M 14x25
25		5812019	Rondella 14	Washer 14
26		2712007	Supporto 35	Support 35
27		6536539	Supporto sinistro	Support, left
28		5801380	Rondella 12 Grower	Washer 12
29		7402388	Vite M 12x25	Screw M 12x25
30	FFH240	0136541	Albero superiore	Upper shaft
30	FFH270	0136542	Albero superiore	Upper shaft
30	FFH300	0136543	Albero superiore	Upper shaft
31		3336031	Flangia (12)	Flange (12)
32		3136542	Disco di protezione	Protection disc
33		2736511	Cuscinetto 2207 2RS	Bearing 2207 2RS
34		6536543	Supporto destro	Support, right
35		6636544	Tampone gomma	Rubber pad
36		5804396	Rondella 14x40 Fascia I.	Washer 14x40
37		2812018	Dado M 14 Autobloc.	Nut M 14
38		6706171	Tappo 72x9	Plug 72x9
39		0936548	Biella	Connecting rod
40		0336510	Anello nilos 72	Ring nilos 72
41		0336030	Anello E 30	Seegerring E 30
42		5036043	Pignone con morso	Sprocket with hub
43		5336549	Protezione corrugata	Grooved protection
44	FFH240	0136551	Albero inferiore	Lower shaft
44	FFH270	0136552	Albero inferiore	Lower shaft
44	FFH300	0136553	Albero inferiore	Lower shaft
45		3136552	Disco di protezione	Protection disc
46		6736064	Coperchio chiusura	Cover
47		4536047	Molla convogliatore	Bush
48		2933528	Deflettore sinistro	Deflector, left
49		2933530	Deflettore destro	Deflector, right
50		1436563	Catena doppia	Chain, double
51		4636064	Calettatore	Locking assembly
54		6136510	Rullo gomma (1)	Roller section rubber(1)
55		6136511	Rullo gomma (2)	Roller section rubber(2)
56		4239039	Ingrassatore dritto	Greaser
57		7236001P	Tubo rame ingrassatore	Copper pipe greaser
58		4236090P	Ingrassatore 90°	Greaser 90°
59		6536500	Biella completa di calett.	Full rod
60		2801378	Dado M 12 basso	Nut M 12



TAV.	TIPO	CODICE	DENOMINAZIONE	DENOMINATION
1		6712028	Tappo olio	Oil plug
2		7436575	Vite M 8x50	Screw M 8x50
3		1336570	Carter sinistro	Chain cover, left
4		1336572	Carter destro	Chain cover, right
5		4717132	Paraolio 45x65x10	Oil seal 45x65x10
6		2712136	Cuscinetto 6009	Bearing 6009
7		4136574	Ingranaggio 18 cave	18 splined gear
8		4036571	Guarnizione carter	Seal
9		0306414	Anello E 40	Seegerring E 40
10		4836575	Perno	Pin
11		4152034	Ingranaggio Z 31	Gear Z 31
12		4136573	Ingranaggio 6 cave	6 splined gear
13		1336577	Carter completo	Compl. Transmission
14		1336742	Carter sx (int. 510)	Chain cover left
15		4036743	Guarnizione tonda 6mm	Seal
16		2436017	Corona Z 17 3/4 D	Gear Z 17 3/4 D
17		2436018	Corona Z 20 3/4 D	Gear Z 20 3/4 D
18		4712024	Paraolio 40x60x10	Oil seal 40x60x10
19		0306314	Anello E 35	Seegerring E 35
20		1436568	Catena D 3/4 P.72	Chain D 3/4 P. 72
21		7443520	Vite M 8x35	Screw M 8x35
22		2823001	Dado M 8	Nut M 8
23		6712028	Tappo olio	Oil plug
24		2736012	Cuscinetto 6008 2RS	Bearing 6008 2RS
25		1336745	Carter dx (int. 510)	Chain cover right
26		1336523	Carter completo	Compl. Transmission



35010 CADONEGHE (Padova) - ITALIA - Via Belladoro, 17
Tel. 049/700930 - Fax 049/8870003 - <http://www.bellon.it> - e-mail: info@bellon.it